

# Dash-Miser™ Series

DASH-MISER™  
AND DASH-MISER PLUS™



Model DMP2SRB (shown, with  
Standard Mounting Accessories)

Model DMP1SA



***The Dash-Miser™ Series is ideal for supplementing other safety signals on primary emergency vehicles such as fire and rescue trucks, ambulances, police or law enforcement vehicles (marked or unmarked), volunteer fire personnel and EMT's.***

The Dash-Miser™ Series offers up to four times more effective warning power at sixty degrees than the previous DashMaster® Series. This low profile, high intensity product is designed specifically for interior use.

In addition, it provides a superior warning signal for highway maintenance and utility vehicles as well as temporary or off-the-road caution applications.

## FEATURES

- Low profile, most effective dash/deck strobe warning light.
- One or two lamp models.
- Remote or self-contained strobe power supply.
- Slim, oval aluminum housing mounts on the front dash, suction cup mounts to windshield behind the mirror, fixed to the headliner of most vehicles or can be mounted on the rear deck.
- Universal "Z" bracket allows mounting to any interior location, in any angle to any surface.
- Windshield suction mount and velcro pads are included.
- Linear strobe lamp and reflector assembly provides up to four times more effective warning light intensity at sixty degree angles.

- Self-contained strobe models feature Whelen's exclusive CometFlash®, the most effective flash pattern on the road today.
- Each individual lens is available in choice of six safety colors.
- Optional kits include: magnetic mount kit, pedestal foot, coiled cord with cigar plug, straight cord with in-line switch and cigar plug, and non-glare windshield hood.



*Designed &  
Manufactured  
in the U.S.A.*

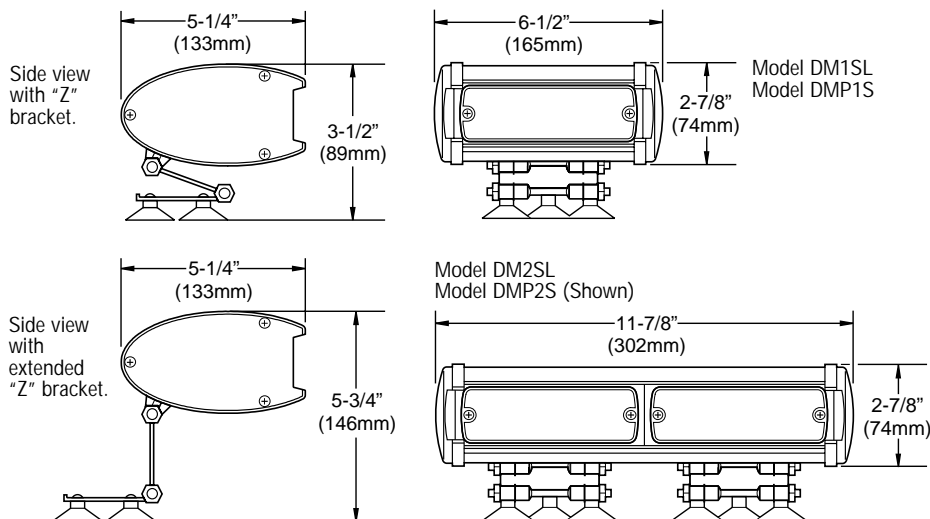


Available in  
all 6 safety colors

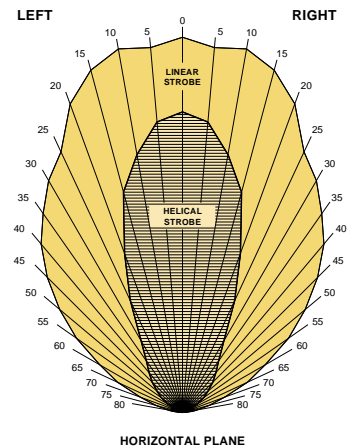
Form# WDM0503

**WHELEN®**  
Engineers for the Emergency Warning Industry

## DASH-MISER™ SERIES SPECIFICATIONS



## WARNING INTENSITY



The linear strobe lamp and reflector assembly provides up to 4 times more effective warning intensity at a 60° angle than Helix Strobe lamps.

## MODEL DESCRIPTIONS

### DASH-MISER™

**Remote Models:** Requires Whelen remote strobe power supply, purchased separately.  
Input cables: 15' strobe.

**MODEL DM1SL\*** . . . Single linear strobe lamp.

**MODEL DM2SL\*\*** . . . Dual linear strobe lamps.

### DASH-MISER PLUS™

**Self-contained Models:** Includes straight 8' cord and cigar plug.

**MODEL DMP1S\*** . . .Single strobe lamp, CometFlash®.

**MODEL DMP2S\*\*** . . .Dual linear strobe lamps, CometFlash.

## OPTIONS FOR DASH-MISER™ & DASH-MISER™ PLUS

**DMPSC** . . . . . 3 piece suction cup kit, with velcro  
(for one "Z" bracket assembly)

**DMPZBKT** . . . . . Universal "Z" mounting bracket (one assembly)

**DMPED** . . . . . Pedestal foot bracket kit, (one foot assembly)

**DMMM** . . . . . 90 lb. pull magnet mounting kit

**DMCC** . . . . . Coiled cord with cigar plug kit

**DMPCPSW** . . . . . Cord with in-line switch and cigar plug kit

**EXT15** . . . . . 15' of extension cable  
(for Dash-Miser remote strobe series only)

**DMPWH2** . . . . . Non-glare windshield hood, dual lamp model only

**DMBUNI** . . . . . Universal behind the mirror mounting bracket

† Due to variations in vehicle surfaces and operating conditions, using any magnetic mounted warning beacon on a vehicle while in motion is at the discretion and risk of the user.

## STANDARD ACCESSORIES

Standard accessories with each unit include (3) windshield suction mounts, and velcro pads.



**CAUTION!** Do not install this product and/or route wires or cord in the deployment path of an air bag. Equipment mounted or located in the air bag deployment area will be damaged or reduce the effectiveness of the airbag, or become a projectile that could cause serious personal injury or death. To determine the airbag deployment area, refer to vehicle manufacturer's manual or instructions.

## How to order:

Replace \* symbol in model number with letter indicating lens color desired:

A = Amber, B = Blue, C = Clear, R = Red, G = Green, V = Purple



Route 145, Winthrop Road  
Chester, Connecticut 06412-0684  
(860) 526-9504 • Fax: (860) 526-4078  
www.whelen.com



Whelen Engineering reserves the right to upgrade and improve products without notice.

© 2003 Whelen Engineering Company, Inc.  
Form No.10040F-0503